

SPFLEXC001

Hardware Installation Guide





CAUTION

- Please ensure that you read and understand the content of the installation guide before you begin the installation process.
- This product must be installed by a professional installer.
- Please don't power the hardware, until the entire solution is fully assembled.
- This product is designed to be bolted to a wall/counter.
- This product is intended for indoor use only.
- Do not overtighten the fixings.
- If these installation instructions are not followed precisely, it could lead to product failure and potential personal injury.
- It is the responsibility of the installer to use the appropriate fixings for the specific installation location. Please follow the fixing suppliers recommendations for installation.
- This solution is designed for certified hardware and accessories. Always follow the installation guide from the hardware manufacturer for correct installation.
- Ergonomic Solutions / SpacePole inc. cannot be held responsible for any product failure or personal injury, if the installation instructions are not followed correctly.
- Ergonomic Solutions / SpacePole inc. cannot be held responsible for any product failure or personal injury, if any modifications have been made to the product by the customer.

MAINTENANCE

- It is the responsibility of the customer to periodically check the installation and ensure it is clean, all air ventilation holes are free and all fixings are tightened correctly.

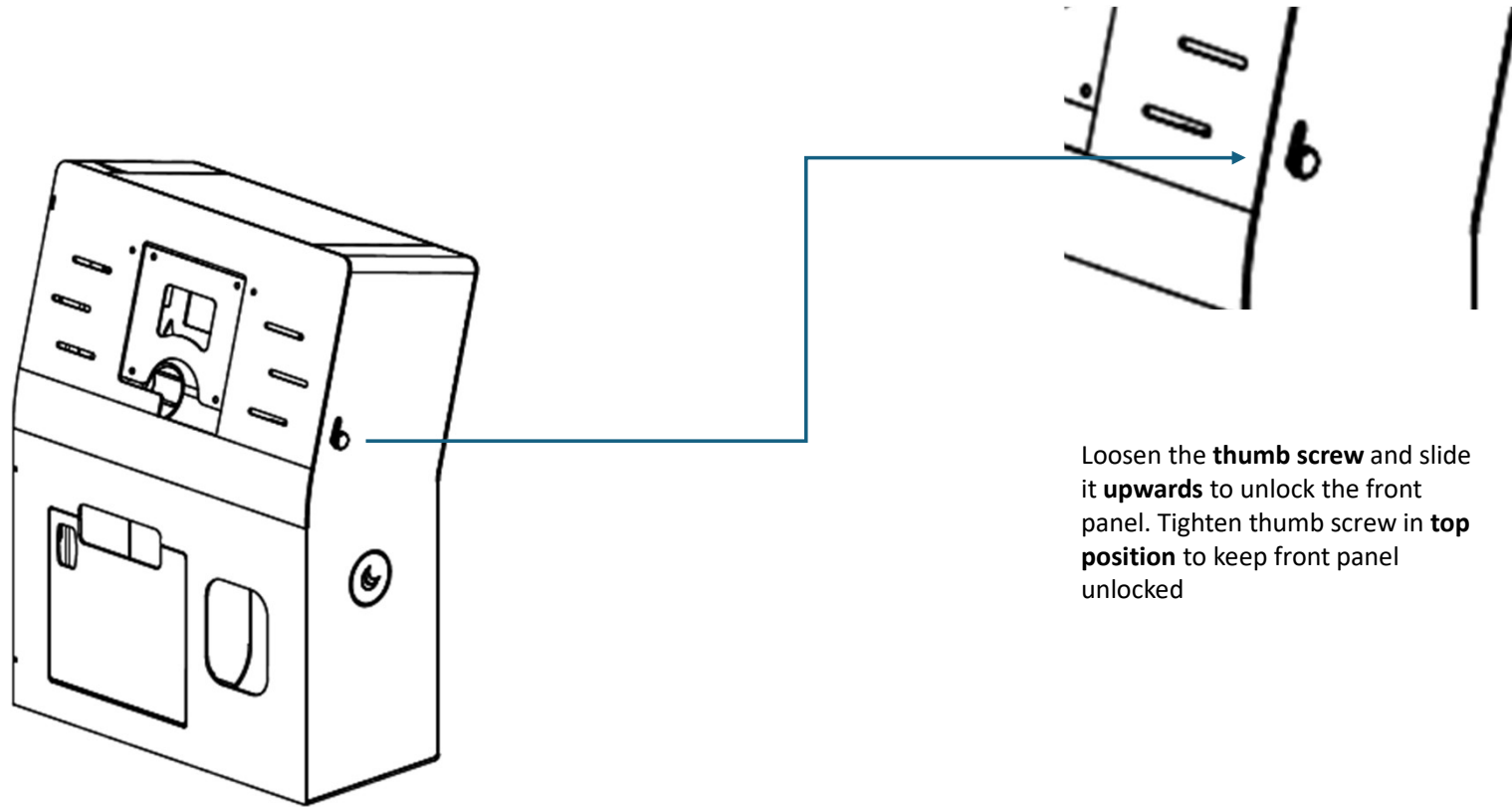
Box content



 4x Pan head K30x12mm

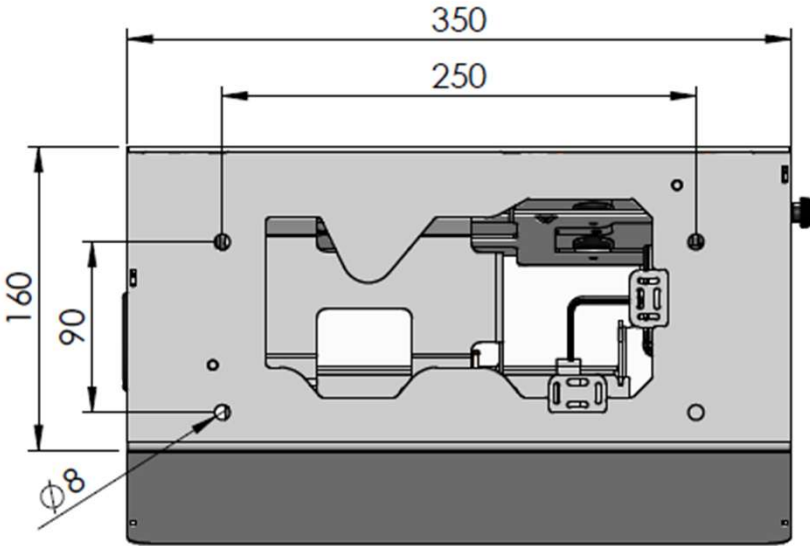
1x The **SPFLEXC001** is supplied pre-assembled. Only the hardware components described on the following pages must be installed during the installation process.

Step 1: Opening the SPFLEXC001

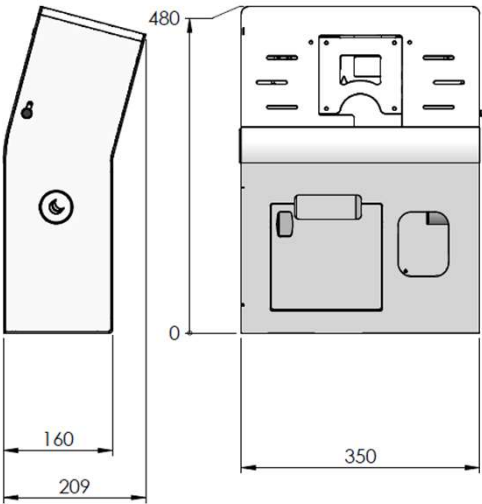


Loosen the **thumb screw** and slide it **upwards** to unlock the front panel. Tighten thumb screw in **top position** to keep front panel unlocked

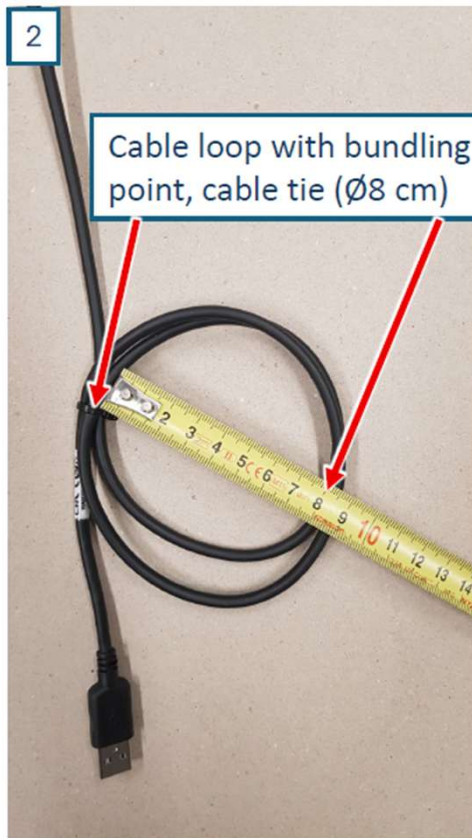
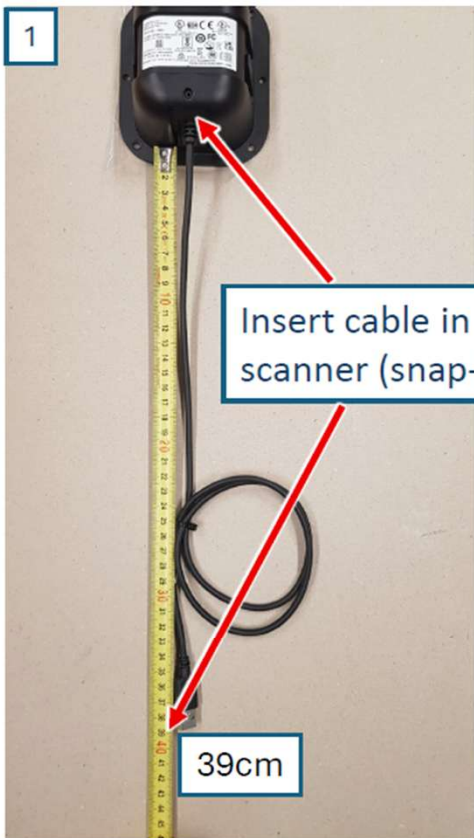
Step 1: Mounting the SPFLEXC001 to the counter



The unit has an overall footprint of **350 × 160 mm**. The mounting hole pattern is **250 × 90 mm**, with **4 x Ø8 mm holes**.



Step 2: Prepare and mount the scanner.



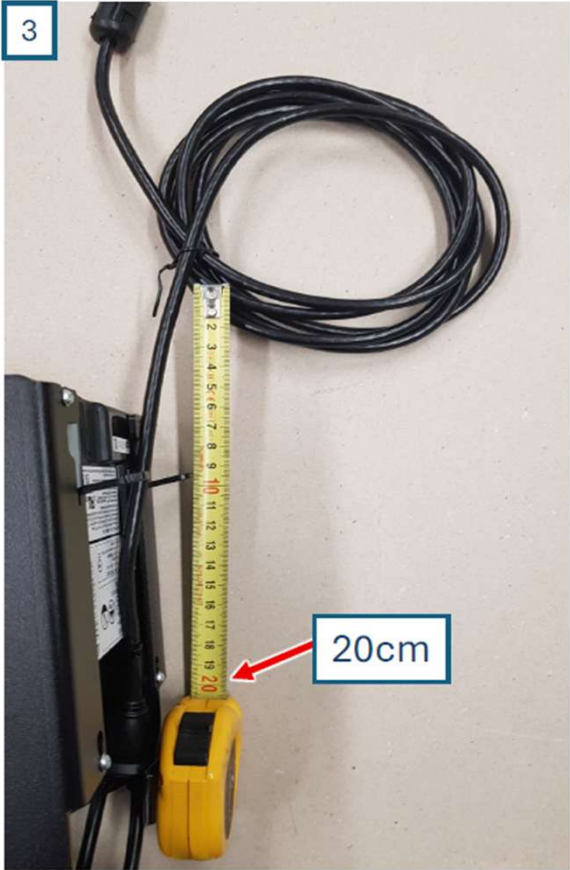
Step 3: Prepare and mount the printer.



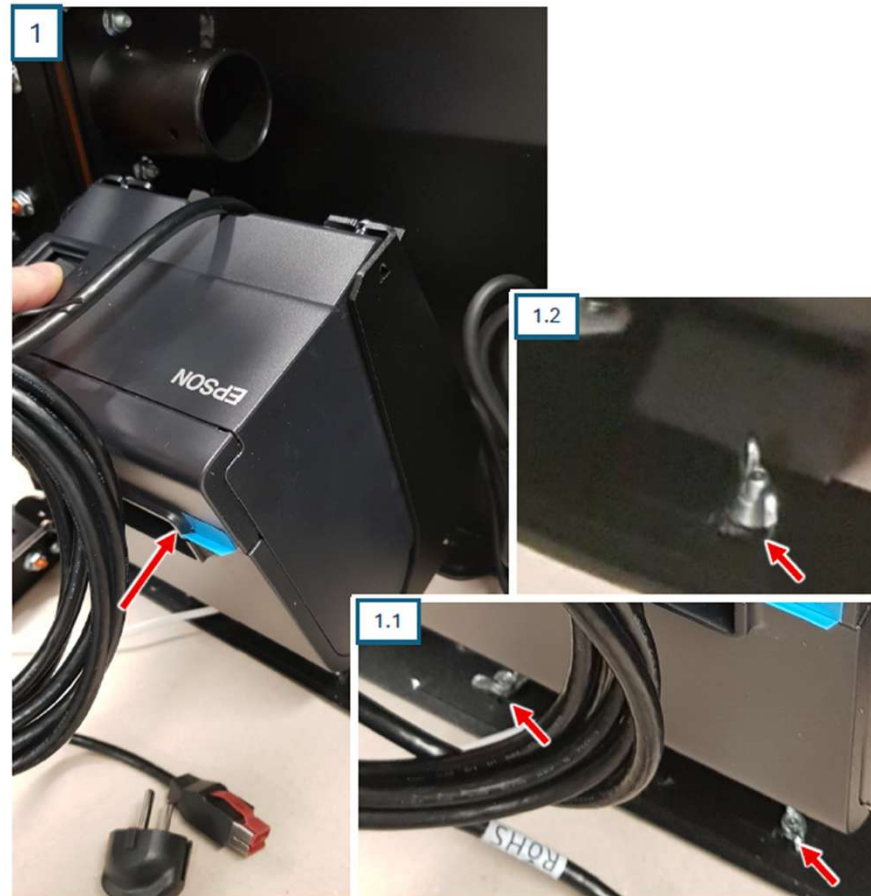
4x Pan head K30x12mm



Step 3: Prepare and mount the printer. (Continued)

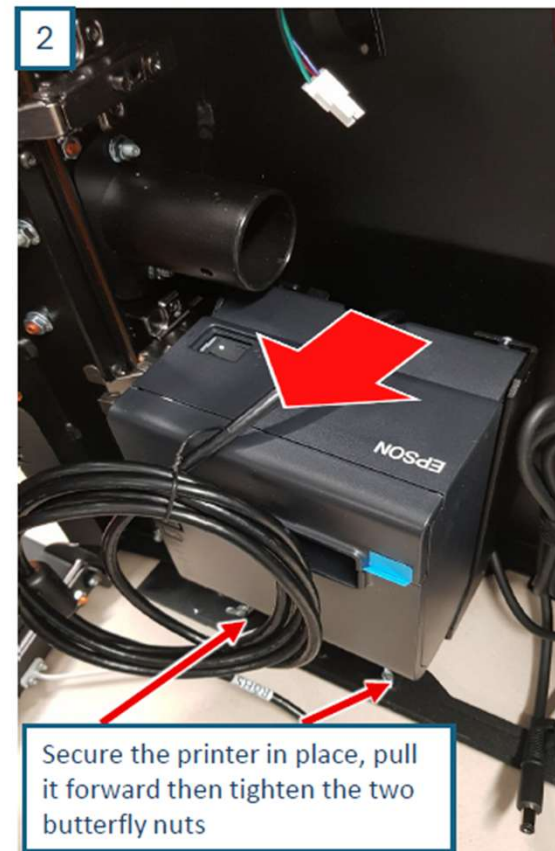
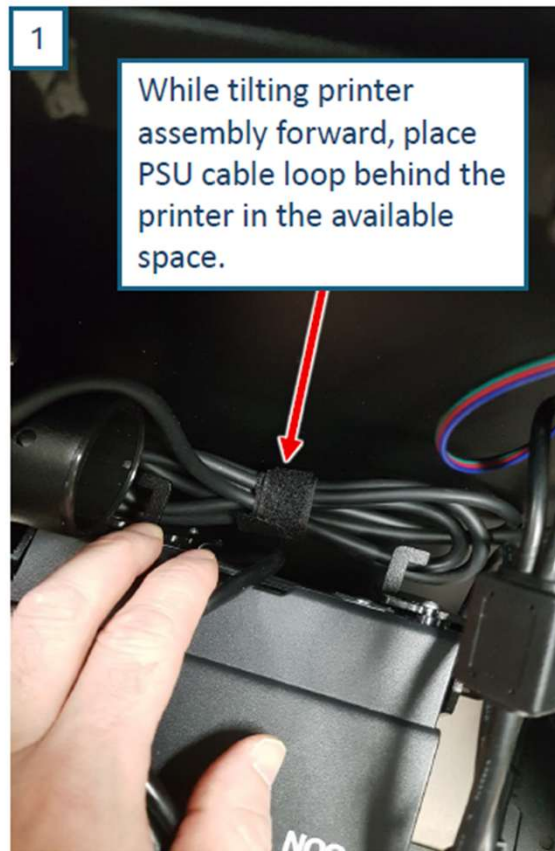


Step 3: Prepare and mount the printer. (Continued)

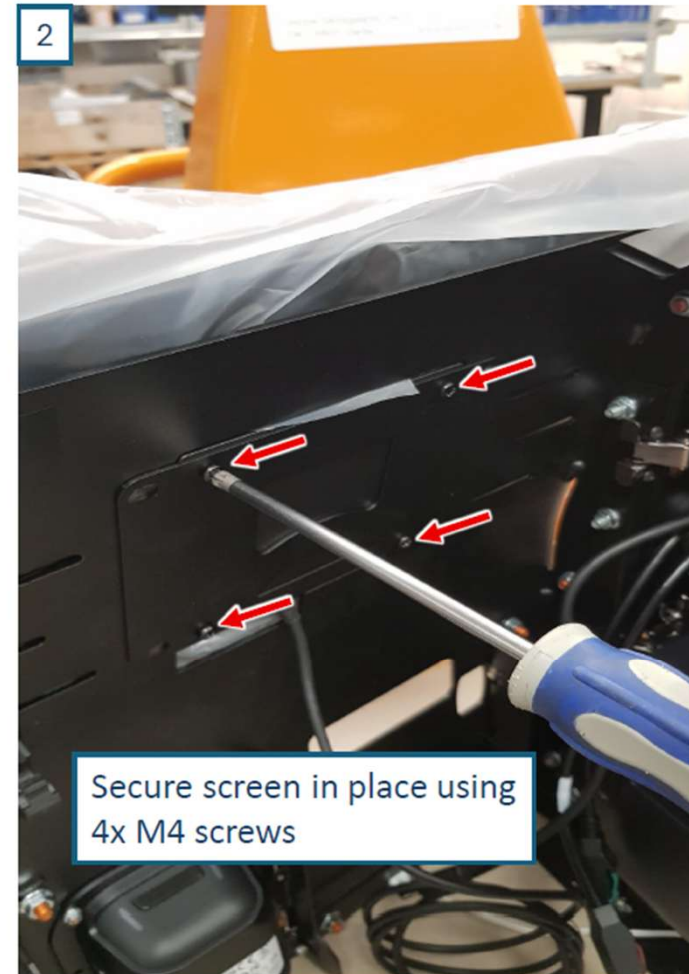
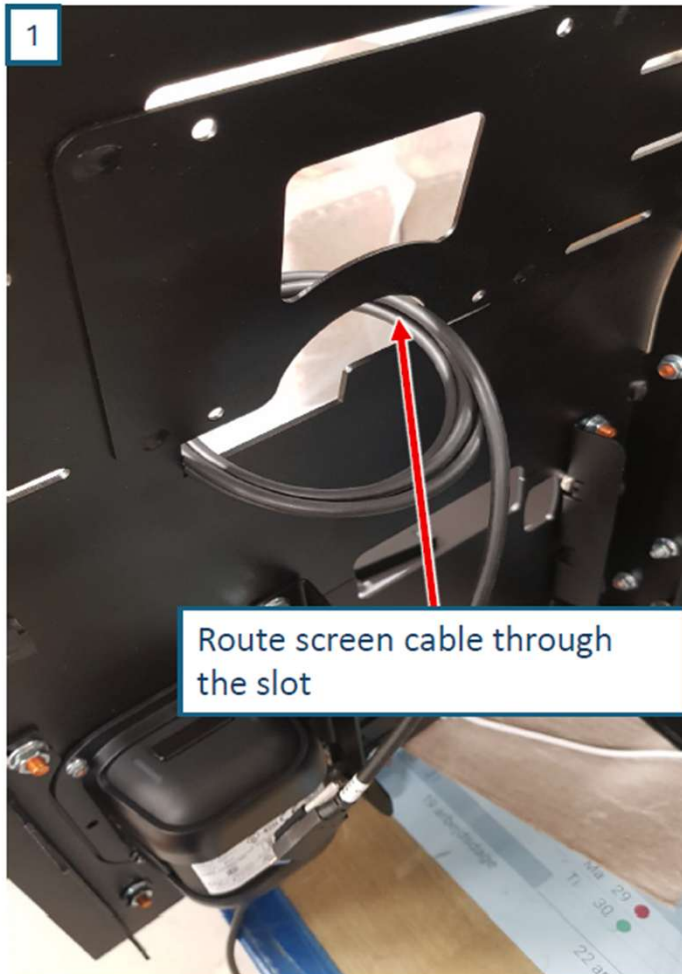


Tilt printer assembly forward, align and grab under the butterfly nuts. Push in position.

Step 3: Prepare and mount the printer. (Continued)



Step 4: Prepare and mount the screen.



Step 4: Prepare and mount the screen. (Continued)

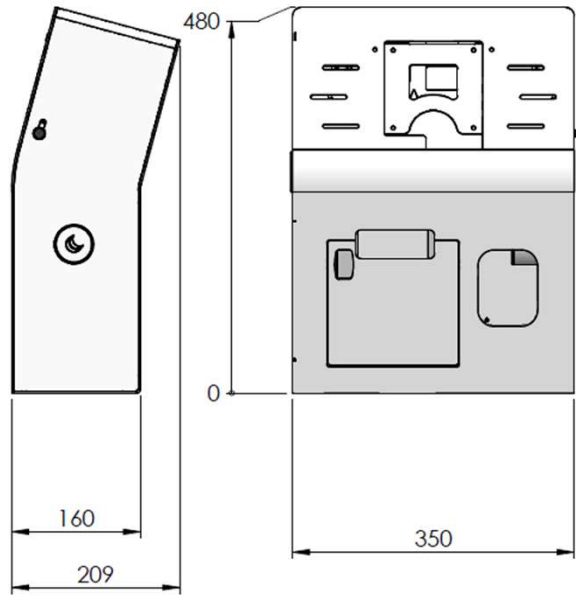


How the enclosure with the integrated hardware should look.*



* HP hardware used.

Dimensions [mm]



Need help? Contact us



**ergonomic[®]
solutions**
creators of SpacePole



spacepole[®]
an ergonomic
solutions company

ergonomic.solutions/about/contact-us

spacepole.com/about/contact-us